

“How Personality Affects Learning Style”

BY

MARY JO DEERWESTER,
ADVISOR

COLUMBUS STATE COMMUNITY COLLEGE

Inside this issue:

How Personality Affects Learning Style	1-2
Spring Quarter Important Dates	2
Spring Fling	3
Tutoring is Available	4-5
Forward Your CSCC Email to Another Email Account	6
Helpful Websites	7

Have you ever overheard a conversation similar to this one?

Jill: “What classes are you taking this quarter?”

Chris: “SSCI 103, HUM 111, and ENGL 101. By the way, you know that instructor you recommended for SSCI 103? I can’t stand that class. Actually, the class is O.K., but I hate the way she teaches.”

Jill: Are you kidding!? She’s my favorite instructor. I wish I could take more classes from her. How can you not like her?

Chris: She is so disorganized. She told us we were going to have a quiz on Monday, so I studied real hard over the weekend. I get to class and she said that she changed her mind and that we’ll have the quiz on Friday.

Jill: What’s wrong with that? Now you have a few extra days to study.

Chris: I already studied. I was ready to take the quiz Monday and get it over with. Now I have to wait until Friday and I have other assignments to work on. When she says that she’s going to do something, then she should do it!

Jill: Well, there are probably other people in your class that are glad to have a few extra days to study.

Chris: That’s another thing. She assigned us a ten page paper to write, which was due two weeks ago. I did mine and I turned it in. I’ve heard that there are other students in the class who haven’t turned in their paper yet. They just talked to her and she gave them an extension. One guy hasn’t even started his paper yet, but she’ll let him turn it in – late!

Jill: Why do you care? You wrote yours and it’s done.

(Continued on page 2)



"What lies behind us and what lies before us are tiny matters compared to what lies within us."
-- Ralph Waldo Emerson

Chris: It's just not right. If she sets a deadline for a paper, she should enforce it. Letting students turn things in late is ridiculous. When those students graduate and get a job, what do you think their employer will do when they ask for an extension on a deadline? They will be lucky if they don't get fired. Speaking of jobs, I have to go to work. I like to get there about fifteen minutes early so that I can get things organized.

Jill: Well, I'm sorry you don't like the class. I have to go too. My Math class starts in a few minutes and he gets really upset if anyone comes in late. I don't see what the big deal is if someone is late.

Chris and Jill seem to be very different. We all have different preferences and those preferences help determine our personality type. According to Katharine Briggs and Isabel Briggs Myers, there are sixteen different personality types. Determining which type best describes you can be very helpful in choosing a career and in developing study skills that will work best for you.

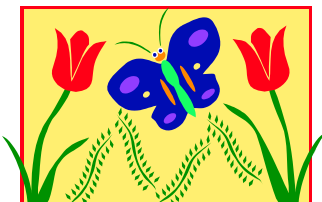
If you would like to learn how to use personality type theory to improve your study skills and/or to help you choose a career, stop in the Advising and Counseling Services office in Aquinas Hall, Room 116 or give us a call at 287-2668. We would be glad to assist you.

SPRING QUARTER IMPORTANT DATES

March 27 - June 10, 2006

Full Quarter Classes Begin.....	March 27
Easter Sunday—Campus Closed.....	April 16
Registration Begins for Summer Quarter.....	April 24
In-Service Day- Offices Closed—No Day Classes.....	May 5
Last Day to remove Incompletes from Winter Quarter, 2006.....	May 6
Memorial Day —Campus Closed.....	May 29
Last day to drop full quarter classes.....	May 30
Graduation Ceremony	June 9
Spring Quarter 2005 Ends.....	June 10

Spring Fling



Thursday, May 11th

11:30 a.m.—1:30 p.m.

Outside on the Commons

Campus Clubs & Organizations, Food and Games.

Join the Fun!!



“The greatest good you can do for others is not to share their riches, but to reveal to them their own..”

-- *Disraeli*

Tutoring Available at Columbus State

DEV Math Lab/Learning Skills Center

Aquinas Hall 213

The lab serves students in DEV 030- Basic Math, DEV 031 – Pre-Algebra, and DEV 028 – Algebra Foundations. Students may walk-in to receive assistance with homework, or with correcting tests. Help is provided by mostly from Instructor, but also qualified tutors. Students may also use computers in the lab to complete on-line homework. Hours in the lab are Monday –Thursday 8:00 a.m. – 8:30 p.m., Friday 8:00 a.m. – 4:30 p.m., and Saturday 9 a.m. – 1:00 p.m.

DEV Reading and Writing Lab/Learning Skills Center

Aquinas Hall 214

This lab serves students in any DEV Reading or Writing course. Students in DEV 041 and DEV 040 have specific lab assignments to be completed weekly. Students enrolled in DEV 006, DEV 007, DEV 015 or DEV 044 are encouraged to visit the area for extra tutoring. Most assistance is available on a walk-in basis; no appointment necessary.

One-on-one tutoring is available for students who need help on writing assignments for developmental classes. Students need to sign up for a 30 minute block of time to meet with a tutor. Tutors cannot proof-read or edit assignments, but they can assist with prewriting, drafting, revising, or specific editing issues. The sign-up sheet is posted in Aquinas 214.

Hours are Monday – Thursday 8:00 a.m. – 8:30 p.m., Friday 8:00 a.m. – 4:30 p.m. and Saturday 9:00 a.m. – 1:00 p.m.

Math – Learning Resource Center

Davidson Hall 313

Faculty tutoring is provided for Math 100 through Math 290. No tutoring for DEV 030 or DEV 031. No appointments...just walk-ins. See Math Department home page for time schedule - <http://www.csc.edu/docs/math/LRC%20Winter%20Schedule.pdf>

Peer Tutoring Center**Aquinas Hall 241, 287-2474**

A tutor is provided for most courses offered at Columbus State Community College. Peer Tutoring is Free for students enrolled at Columbus State Community College. To obtain a Peer Tutor, complete a Peer Tutoring Request Form in Aquinas Hall, Room 241, located in the Developmental Education Department. Schedule an appointment with the Peer Tutoring Coordinator. If the coordinator is unavailable, you may schedule an appointment by calling 287-2474. When you meet with the coordinator, you will be given a tutor assignment. If a tutor is unavailable, the coordinator will discuss other options.

Science Tutoring, Learning Skills Center**Franklin Hall 245**

Faculty tutors are available on a walk-in basis, beginning the second week of the quarter, through the last week of the quarter. A schedule of available tutors is located outside Franklin 245, as well as in the departmental office in Nestor 408. The department also offers open labs for anatomy and geology in Union Hall 323 and 325. A schedule of these labs is posted outside the lab and in Nestor Hall 408.

Speech Rehearsal Lab**Nestor Hall 017, 287-5391**

Do you need advice about preparing or delivering a speech? Would you like to videotape a rehearsal of your next presentation? The tutors in the Speech Rehearsal Lab can assist you with the speech preparation process. Staffed by Communication Skills instructors, the lab is open to faculty, staff, and students at convenient times. The main campus location offers the use of a slide projector; a TV and VCR; an overhead projector; a computer cart with Internet access, PowerPoint and a video projection screen; and a tutor-operated video camera. The videotape and the coaching advice are absolutely free. We recommend that you schedule an appointment, but drop-ins are accommodated whenever possible. The lab has flexible hours six days a week.

**Writing Center****Franklin Hall 245****Mon. – Thurs. 9 a.m. – 8 p.m.,****Fri. 9 a.m. – 4 p.m.****Nestor Hall 421 – Sat 9a.m. – 1p.m.**

Free one-on-one tutoring for students, faculty and staff. It is highly recommended to make a reservation for tutoring by calling **287-5717**. Tutors work with writers on a variety of assignments such as critical essays, research papers, reviews, résumés, formal business letters, lab reports, case studies, poems, and job applications. Tutors do not write papers, edit final drafts, or discuss grades, but they do help writers improve grammar, punctuation, organization, spelling, vocabulary, and other skills related to writing. The Writing Center is not a proofreading or editing service. Note that the Writing Center is closed the first week and finals week of the quarter.

How to Forward Your Email to another Account

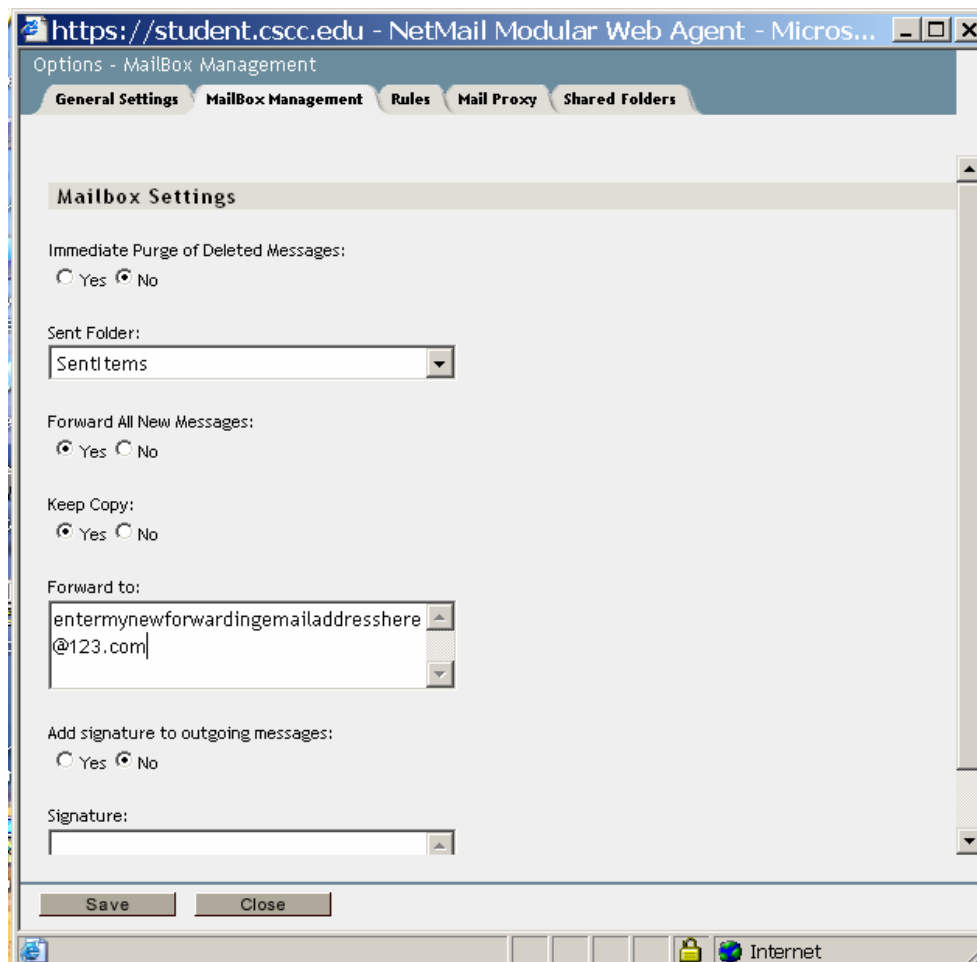
By Betty A. Richardson
I. T. Support Center Specialist
I. T. Support Center
Columbus State Community College

Are you finding that you have too many email accounts to remember? Well, with your student email account you can forward them to another account by following these steps:

1. Logon to your CSCC student email. (website:student.cscs.edu)



2. At the top of the email box, look for the **Options** icon .
3. On the **General Settings** tab, look for the **Mailbox Management** settings.
4. Under the **Forward all new messages**, click yes.
5. Under **keep copy**, click yes.
6. In the **Forward to box**, enter the complete forwarding address.
7. Click Save.



Once this process is completed, your Cougar Mail should forward to your personal email address. Please be sure to check you CSCC email (Cougar Mail) for information from CSCC. This is now the primary means of communication for Columbus State students. If you need assistance, please call the **I. T.Support Center** at 287-5050.

HELPFUL WEBSITES



www.adultstudentcenter.com - The Adult Student Center, your resource for information and guidance on returning to college.

www.back2college.com - Articles featuring adult learners, forums for adult learners and also resources and scholarship information.

www.columbuschildrens.com—Columbus Children’s Hospital Web Site...a resource for services such as physician referral and health and wellness information.

www.csc.edu - Columbus State Community College (application, registration, fee payment, catalog, academic advising directory, adult learner link, etc.).

www.fafsa.ed.gov - Internet access for filing FAFSA (Free Application for Federal Student Aid).

<http://www.how-to-study.com/LearningStyles.htm>—Provides an explanation of three learning styles: auditory, visual and Tactile.

<http://ohioline.osu.edu/lines/fami.html>— Site by OSU College of Food, Agriculture and Environmental Sciences. Offers a variety of family information including childcare, aging, child development, stress, etc.

www.singleparentcentral.com—U.S. Census Bureau information and online resources for single-parent families.

www.sunshineladyfdn.org—Provides scholarships and assistance to battered women and their children.

COLUMBUS STATE COMMUNITY COLLEGE

"Go confidently in the
direction of your dreams.
Live the life you have
imagined."

-Henry David Thoreau

The **Adult Learner Connection** is a creation of Advising and Counseling Services /
Laura Huston-Hoburg, Counselor at Columbus State Community College. For more
information please call 287-5023, or stop by Aquinas Hall, room 116.